



11a Alamein Road
 Panmure, Auckland 1072
 (09) 527 6345 | 0800 527 634
 admin@tamakiprimary.school.nz
 www.tamakiprimary.school.nz

Whāia te ara tika | Pursue the right path

Term 3 Week 2 Newsletter: Friday | Rāmere 28 July 2023

Kia ora, Mālō e lelei, Talofa lava, Kia orana, Fakaalofa atu, Bula Vinaka, Kamusta, Ayubowan, Salam



Nau mai hoki mai, welcome to Term 3, especially our new parents/whānau and students, delighted you could join us at last week's Pōwhiri! Welcome Miss Kathleen Horn (Finance Administrator) and Mr Khan (Caretaker), who've made such a smooth start, providing key administration and property support!



We hope you enjoyed some special whānau time on Matariki Day. During the holidays, the teachers and I enjoyed our literacy reading PLD. Improving ākonga reading/pānui and increasing vocabulary is one of our Annual Goals. The tamariki have enjoyed a fun-filled start to their learning programmes. We continue with our local histories student inquiry, building on knowledge about important landmarks, leading into our school wide visual art focus: 'Pūrakau' and ngā tohu o te rohe.

Pick up and drop off

The Office is receiving several phone calls to collect children before home time. This is causing much disruption to teachers' programmes and impacting staff and student end of day routines. Senior monitors also need to carry out their school wide duties before home time.

Unless it is an emergency, or you have a scheduled appointment to go to, please do not call the Office, or go to classrooms to collect your child. School finishes at 3 pm. Please wait outside and until home time. Your co-operation will greatly help with a safe and happy end of day for all.

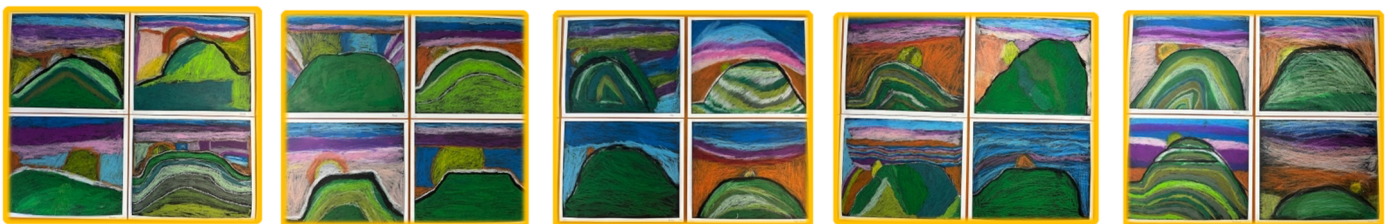
Cook Island Language Week - 'Epetoma o te reo Māori Kūki 'Āirani

We look forward to celebrating language and culture next week! This year's theme is: 'Ātuitui'ia au ki te au peu o tōku kāinga Ipukarea, meaning, "connect me to the traditions & culture of my homeland". Please join us for our special School Assembly next Friday/Rāmere @ 11:45 in the Hall/Hōro!



Term 3 Sports

Mrs Tafea is delighted that the Rugby League Tournament has been rescheduled Wednesday 9 August. Super proud of our ākonga practising for the upcoming Basketball Tournament Thursday 10 August, big thanks Coach Whaea Kelly! Looking forward to another friendly Y7/8 Netball Competition at Pakuranga Intermediate on Tuesday 22 August. The Y3-8 Netball Tournament is on Tuesday 12 September and the Y5-8 Rippa Tournament, Tuesday 29 August. Mālō 'aupito Mrs Tafea for her organisation and parents/whānau for reading your child's notices. Any queries please contact Mrs Tafea ©



Check out the beautiful pastel art work showing mighty Maungarei – super proud of your artistic skills R3 ākonga ❤️

As always, you're welcome to visit, call or email me.
 Kia pai tō rā whakatā 🌸 Fa'afetai lava,

Dr Deanna Johnston
 Principal | Tumuaki
djohnston@tamakiprimary.school.nz



Term 3: Monday 17 July to Friday 22 September

Board Meetings: Each Week 5 and Week 10 – Wednesday/Rāapa 16 August and 20 September @ 8 am

Cook Island Language Week & School Assembly: Friday/Rāmere 4 August @ 11:45 am in the Hall/Hōro

Rugby League Tournament: Wednesday 9 August @ Mt Wellington Memorial Grounds

Basketball Tournament: Thursday/Rāpare 10 August @ Barfoot & Thompson Stadium

Boys' and Girls' Y7/8 Netball Competition: Tuesday/Rātū 22 August @ Pakuranga Intermediate School

Y5–8 Rippa Tournament: Tuesday 29 August @ Mt Wellington War Memorial Grounds

Y3–8 Netball Tournament: Tuesday 12 September @ Auckland Netball Centre

Student arrival and leaving times

- School starts 8:55 am and finishes 3 pm
- If late, students must sign in at the Office and go straight to class (learning time has already begun)
- Parents/visitors wait outside until home time. Please **do not call the Office unless it is an emergency, or you have an appointment to go to.** Please do not go to classrooms to collect your child before 3 pm

Drop off / Pick up:

- Parents only use Tripoli and Benghazi Rd and/or surrounding streets
- For everyone's safety, please **do not park in or drop off through Alamein Rd gate** (our Sommerville School taxis/cars/vans and regular utility vehicles need safe access to the turning bay and exit gate)
- Please do not park on Sommerville School grass verge (it is unsafe for Sommerville staff and their taxis/cars/vans)

Walking to School:

- Safely use the paths and Tripoli Rd pedestrian crossing (8:30 – 8:55 am; 3:00 – 3:15 pm)
- Pedestrian paths at Benghazi Rd and Alamein Rd (over the little bridge and use the mini Zebra crossing)

Food/Drink/Free healthy lunches:

- Each day. Any dietary change, please contact Mrs Sharma (DP)
- Water only bottle each day (no fizzy, juice)
- Keep sweets, gum and convenience packaged foods at home
- 'Pack in, Pack out' means any food packaging brought to School, goes home with your child

Breakfast Club:

- Some social fun for tamariki as they enjoy some healthy kai in the Hall 8:10 am – 8:40 am

Notices, Newsletters/Pānui:

- Paper copies to the eldest/only child (Friday fortnightly)
- School website www.tamakiprimary.school.nz (our main online communication)
- School Facebook page for celebration, includes links to the main Newsletter or reminder notices

Queries, concerns, School info:

- See your child's teacher in the first instance. You may then like to see the Team Leader, DP or Principal. You're welcome to visit, call the School or email the teacher, TL, DP or Principal. Please do not delay
- TPS Policies info link is on our School Website. Click on 'Our School' then 'Policies and Procedures'. Any queries please speak with/contact the Principal first. Please do not delay

Enrolments:

- Visit or call the Office first and we'll help you enrol your child. See our 'Enrolment' page on our Website
- The Principal meets with new students, parents/whānau before enrolment and class placement

Uniform, stationery & devices:

- Uniform is compulsory including hats in Term 1 and Term 4; all can be purchased at School
- Eftpos or Internet banking only. Please see Miss Kathleen Horn in the Office
- TPS stationery can be bought from Warehouse Stationery Lunn Ave and Sylvia Park (ask for the TPS lists)
- No student cell phones at School; if needed let the teacher know first; placed in the Office in the morning
- **Devices – we provide a TPS device (iPad or Chromebook) for each student, these are used for learning at School. Tamariki do not need to buy/bring their own**

