



Whāia te ara tika | Pursue the right path

## Term 4 Week 6 Newsletter: Friday | Rāmere 17 November 2023

*Kia ora, Mālō e lelei, Talofa lava, Kia orana, Fakaalofa lahi atu, Kamusta, Ayubowan, Salam*

We hope you've had a beaut week!



### Te Kōtuku Cultural Festival – Kapa Haka

We're super excited for *He Iti Mapihi Pounamu*, capably led by Kōkā Anahera, who will be performing tomorrow **Saturday 18 November at Ruapōtaka Marae, approximately 11 am** (subject to change by the

organisers). Ngā mihi nui ki a Kōkā for setting high standards and your manaakitanga with our ākongā. We're excited for our ngā hine who'll be wearing our new heru, blessed by Kōkā Thank you parents and whānau for your support, we're super proud of ākongā showing Rangatiratanga!



### Congrats to recipients of School Value Certificates

TPW Kuini, Kassidy; R1 Isabella, Mahalia; R2 Filipo, Chana; R3 Lucia, Verna, Mariaola, Holyfield; R4 Yvonne, K'malyah; TmT Florence, Evan; R6 Anthony, Halayla; R8 Athena, Mya; R9 Chicago, Savannah

♥ **Whānau House Winner in the past two weeks: 1<sup>st</sup> Alamein, 2<sup>nd</sup> Tobruk, 3<sup>rd</sup> Benghazi, 4<sup>th</sup> Tripoli.**

**Whāia te ara tika**, continue to pursue your goals and show our TPS Values **Manaakitanga, Kaitiakitanga, Rangatiratanga!**

Happy Diwali, nameste and thanks to the Senior Team - Mrs Sood, Mrs Kaur and Mrs Sharma for a positive celebration and sharing special Diwali kai!



### Prize winners

Congratulations to our prize winners of the Board's Strategic Plan Hui/Fono and Survey parent/whānau feedback. Thank you for sharing your helpful ideas and positive aspirations so that the Board can finalise the 2024 Strategic Plan.

**Tino pai winners:** Langiola - Countdown food voucher; Azaria - food pack; Ana and Alayna – new uniform; Lolani - Christmas toys; Kairo - stationery pack; John Nelson - Lego.

### End of Term events

Please see last Friday's full reminder notice with dates for the remainder of the Term. It's certainly going very fast! Remember all notices are also on our website as well as on our Facebook page (click on the link under the post).

**\*Y1-8 Class Awards: Wednesday 6 December @ 1 pm, Hall/Hōro**

**Y7/8 Awards & Y8 Graduation: Thursday 7 December @ 1 pm**

**Y8 Dine & Dance: Thursday 7 December @ 5 pm, Hall/Hōro**

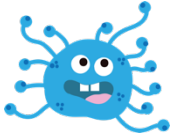


As always, you're welcome to visit, call or email me. Kia pai tō rā whakatā 🌸 Fa'afetai tele lava, take care.

Dr Deanna Johnston  
Principal | Tumuaki  
[djohnston@tamakiprimary.school.nz](mailto:djohnston@tamakiprimary.school.nz)

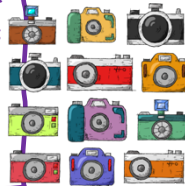


**\*Alamein Road Safety:** You may have noticed there are demolishments / private road works happening outside the School. There'll be further works happening over the next weeks. For the safety of all, there is no drop off inside Alamein gate entrance. Please remember to safely use surrounding streets, paths and crossings. Thank you for your co-operation.



**\*Immunisation Forms:** For Health/Safety reasons, the MoE requires all Schools to keep specific student records. Please check your home email reminder from Miss Sharon. Thank you for emailing these directly to Miss Sharon or calling or visiting her in the Office with your form.

**\*Class Photos:** Please check your home email for a unique code from Photolife to order your child's class photo. Call Miss Sharon in the Office if you need any info. <https://photolife.co.nz/>



**Term 4: Monday/Rāhina 9 October to Monday/Rāhina 18 December**

**Board Meetings:** Twice a Term, Monday 30 October and Wednesday/Rāapa 29 November @ 8 am

**Board Policy Review:** The Board's Term 4 Policy review for your feedback is open. Please check into our TPS SchoolDocs portal on our School website Policies section 😊

#### Student arrival and leaving times

- School starts 8:55 am and finishes 3 pm
- If late, students must sign in at the Office and go straight to class (learning time has already begun)
- Parents/visitors please wait outside until home time, so that teachers and students can finish off their end of day routines. Please do not go to classrooms to collect your child before 3 pm. If you need to collect your child earlier for an appointment, call the Office in advance and collect your child by 1 pm.

#### Drop off / Pick up:

- Parents only use Tripoli and Benghazi Rd and/or surrounding streets
- For everyone's safety, please do not park in or drop off inside Alamein Rd gate (this is for staff parking, Sommerville School taxis/cars/vans and regular utility vehicles need safe access to the turning bay and exit gate)
- Please do not park on Sommerville School grass verge or drive onto our basketball court (it is unsafe for our students, staff and Sommerville staff and their taxis/cars/vans)

#### Walking to School:

- Safely use the paths and Tripoli Rd pedestrian crossing (8:30 – 8:55 am; 3:00 – 3:15 pm)
- Pedestrian paths at Benghazi Rd and Alamein Rd (over the little bridge and use the mini Zebra crossing)

#### Queries, concerns, School info:

- See your child's teacher in the first instance. You may then like to see the Team Leader, DP or Principal. You're welcome to visit, call the School or email the teacher, TL, DP or Principal. Please do not delay
- TPS Policies info link is on our School Website. Click on 'Our School' then 'Policies and Procedures'. Any queries please speak with/contact the Principal first. Please do not delay

#### Enrolments:

- Visit or call the Office first and we'll help you enrol your child. See our 'Enrolment' page on our Website
- The Principal meets with new students, parents/whānau before enrolment and class placement

#### Uniform, stationery & devices:

- Uniform is compulsory including hats in Term 1 and Term 4; all can be purchased at School
- Eftpos or Internet banking only. Please see Miss Kathleen Horn in the Office
- TPS stationery can be bought from Warehouse Stationery Lunn Ave and Sylvia Park (ask for the TPS lists)
- No student cell phones at School; if needed let the teacher know first; placed in the Office in the morning
- **Devices – we provide a TPS device (iPad or Chromebook) for each student, these are used for learning at School. Tamariki do not need to buy/bring their own**

#### Food/Drink/Free healthy lunches:

- Free lunch. Any dietary change, please contact Mrs Sharma (DP) and let the Office know
- Water only bottle each day (no fizzy, juice)
- Keep sweets, gum and processed convenience packaged foods at home
- 'Pack in, Pack out' means any food packaging brought to School, goes home with your child

#### Breakfast Club:

- Some social fun for tamariki as they enjoy some healthy kai in the Hall 8:10 am – 8:40 am

#### Notices, Newsletters/Pānui:

- Paper copies to the eldest/only child (Friday fortnightly)
- School website [www.tamakiprimary.school.nz](http://www.tamakiprimary.school.nz) (our main online communication)
- School Facebook page for celebration, includes links to the main Newsletter or reminder notices

