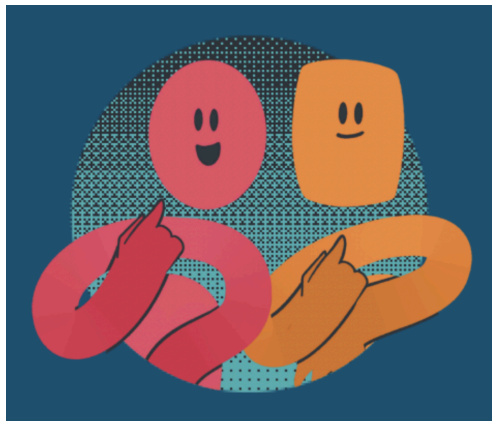




### Kia ora e te whānau!

Our tamariki have been learning, curious, and are enjoying learning together at school, as we head towards a well deserved school holiday break. Our staff are proud of the calm, learning focused tone across the school. Thank you for the way you continue to support learning, get children to school every day, and celebrate their successes. We see the outcomes of our shared efforts in the classroom and in the playground every day. Keep your kids coming to school every day for the rest of the week please. We have a very special assembly to celebrate Te Wiki o Te Reo Māori on Friday at 12 noon, and every child is participating. You are most welcome to join us.



### School Board Elections 2025

We are pleased to share the results of our recent School Board Election. Congratulations to Paula Fakalata-Toloke, Steve Paerau, Anna Bloomfield, Tania Taylor, Evander Oxborough, and Luti Tafea (Staff Representative) who have been successfully elected to serve on our School Board. Our new board brings strong connections to the Tāmaki community, rich cultural knowledge, expertise in their respective fields, and a shared commitment to serve and make a positive difference. We also extend special congratulations to Paula Fakalata-Toloke, who has been elected by the board to lead as our new Presiding Member.

We warmly thank all candidates who put their names forward, including Anna Fleming, Carla Perese, Mele Tangikina Fifita, Anahera Tutengaehe (staff) and Kathleen Horn (staff) for their willingness to serve our kura. Ngā mihi kia koutou katoa.

We look forward to the next three years of governance, working together to serve the tamariki, whānau, and community of Tāmaki Primary School.

### Attendance Update

Our school-wide target is for more than 94% attendance every day. Thank you to all of our whānau who continue to support regular attendance at school. Over the past three weeks, attendance has ranged between 77% and 90%. Our strongest days were Tuesday 16 September (90%) and Friday 12 September (90%), while the lowest was Monday 8 September (77%).

We can see that attendance tends to dip on Mondays and improve by midweek. Every day counts, and keeping children at school every day helps them stay connected, confident, and successful in their learning. Our school-wide goal remains 94% attendance, and we appreciate your support in reaching this together.

Monday Rāhina 1 September 83% attendance	Tuesday Rātū 2 September 87% attendance	Wednesday Rāapa 3 September 87% attendance	Thursday Rāpare 4 September 87% attendance	Friday Rāmere 5 September 85% attendance
Monday Rāhina 8 September 77% Attendance	Tuesday Rātū 9 September 87% Attendance	Wednesday Rāapa 10 September 88% Attendance	Thursday Rāpare 11 Sep 88% Attendance	Friday Rāmere 12 Sep 90% Attendance
Monday Rāhina 15 Sept 85% Attendance	Tuesday Rātū 16 Sept 90% Attendance	Wednesday Rāapa 17 Sep 89% Attendance	Let's aim for 100%	Let's aim for 100%

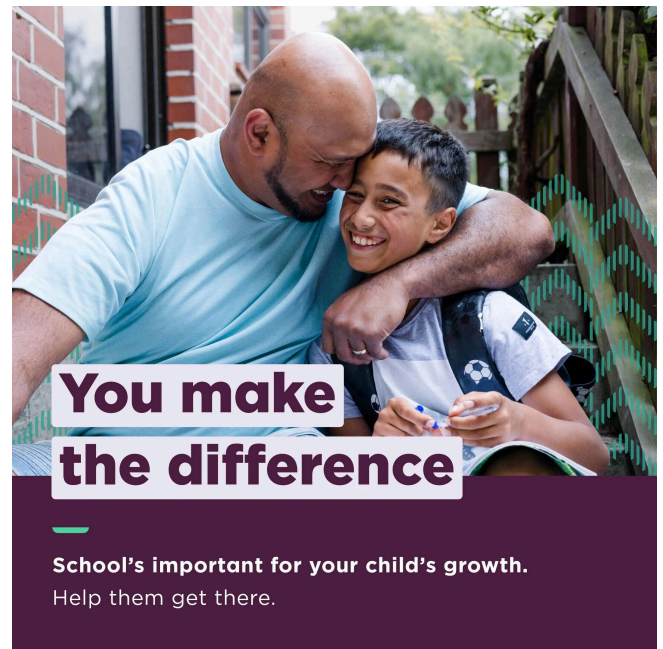


### Out of Zone Enrolments for 2026

Our School Board has confirmed that for the 2026 school year there will be a number of out-of-zone places available at Tāmaki Primary School. We invite applications on this basis.

Applications for out-of-zone places close on **Friday 26 September 2025**. If we receive more applications than there are places, a random ballot will be held on **Monday 29 September 2025**. The ballot will follow the statutory order of priority set by the Ministry of Education. All applicants will be notified of the outcome within three school days of the ballot, and a waiting list will be kept as required. Please note that in-zone applications are always accepted as of right.

If you are interested in an out-of-zone place for 2026, please visit us at the school office, or contact me by email at [cleota@tamakiprimaryschool.nz](mailto:cleota@tamakiprimaryschool.nz) and I will send you guidance on the application process and required documents.



**TĀMAKI COMMUNITY CLUB EXPO**

**THURS 9<sup>TH</sup> OCTOBER 3.30PM-6:00PM FOR AGES 5-13 YEARS**

FIND OUT ABOUT YOUR LOCAL CLUBS AND WHAT THEY HAVE TO OFFER!

**MT WELLINGTON WAR MEMORIAL RESERVE**

Logos for participating clubs: Mt Wellington Rugby Football Club, Bays of Plenty Rugby Football Club, Eagles, East Skate Club, East Volunteering Auckland, Riverside Sports, Remain Sport.

### Upcoming events

**Te Wiki o Te reo Māori 2025:** 15-19 September 2025. We end our week of celebrations of te reo with an assembly at 12 noon on Friday 19 September in the school hall. You are all welcome to join us, every child will be participating by sharing their learning.

**School Board hui:** Our school board meets on Wednesday 5 November and Wednesday 10 December 2025 @ 8 am in the boardroom. School board meetings are open to the public. If you would like to join us at any of these board meetings, please contact our Presiding Member, Paula Fakalata-Toloke at [pfakalata@tamakiprimary.school.nz](mailto:pfakalata@tamakiprimary.school.nz).

**New Enrolments:** Do you know anyone that is going to start school between now and the end of the year? Or anyone who is interested in Rumaki Reo, Tongan Bilingual or Samoan Bilingual education for their children? Please send them to the office to pre-enrol. All are welcome.

**End of Term Three 2025:** Our term ends on Friday 19 September at 3:00 pm. We start back again on Monday 6 October 2025 at 8:55 am. Please make sure your child returns to school, on time, on the first day of Term Four. Attendance matters and every day counts. Thank you for your support.

We are grateful for your ongoing support of our kura, our dedicated staff, and our talented, confident, and compassionate learners. Your care and encouragement mean a great deal to us.

Carol Leota  
Tumuaki | Principal





11a Alamein Road  
PO Box 14 115  
Panmure, Auckland 1072  
(09) 527 6345  
office@tamakiprimary.school.nz

Whaia te ara tika / Follow the right path

## 2026 Classes Expression of Interest

Kia ora e te whānau

To prepare for 2026, we are gathering parent/caregiver interest for full immersion, bilingual, and English medium classes for their children. Please complete the expression of interest form below and return it to school as soon as possible, preferably before Friday 19 September 2025.

My name:	
Phone number:	

My children's names:

Names of children starting school in 2026:

Please ☒ the option you prefer, if you do not respond, your child/ren will remain in their current pathway.

<b>Te Puna Wairua</b> Rumaki Reo Years 1-8  Learning is mostly in Te Reo Māori, with a small amount of English	<b>Talamuka-'a-Tonga</b> Tongan bilingual Years 1-8  Learning is in Lea Faka-Tonga and in English	<b>Penina o Tāmaki</b> Samoan bilingual Years 1-6  Learning is in Gagana Samoa and in English	<b>English Medium</b> Years 1-8  Learning is mostly in English

Please return this form to the office as soon as possible.

Ngā mihi,  
Carol Leota  
Tumuaki

